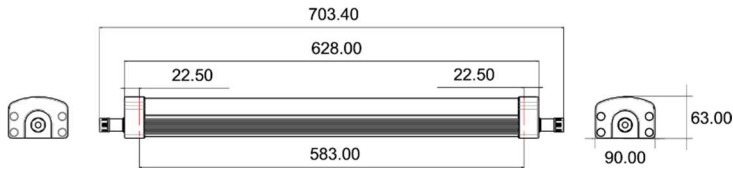


MAR-TP Series

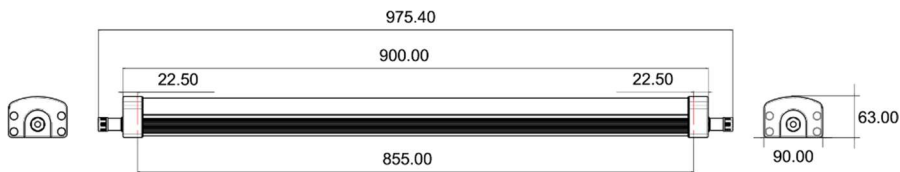


Dimensions

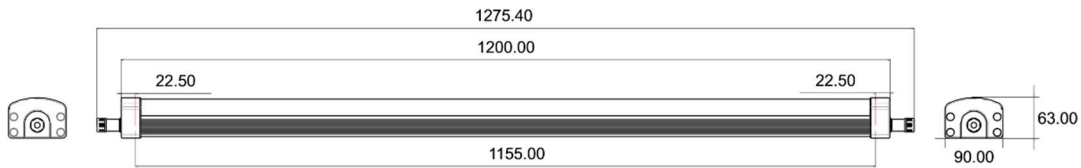
MAR-TP-0030



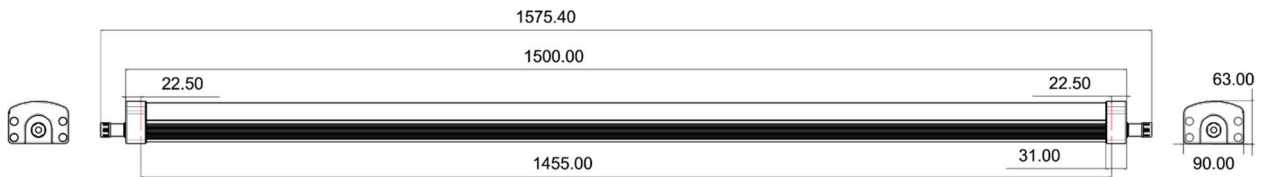
MAR-TP-0040



MAR-TP-0060



MAR-TP-0080



Installation

Installation Overview

MAR-TP Series luminaires are attached using brackets that are ceiling mounted. Two brackets per fixture will be provided. Screws and plastic expansions will not be provided. **Please verify local installation codes with your contractor**

SAFETY INFORMATION:

- The fixture and its components cannot be mechanically pressed.
- Correct electrical polarity needs to be observed at all times.
- Ensure the power is adapted to operate the total load.
- Installation must not damage the conducting paths on the circuit board
- Parallel connection is highly required as a safe electrical operation mode
- When installing on metallic or other surface, an electrical isolation point between strip and the installing surface is recommended.
- Only qualified individuals are allowed to perform installations, modifications, or removals.
- Damages by corrosion cannot be used as grounds for materials defect claim. It is the user's responsibility to provide a suitable protection against moisture, condensation and other harmful elements,

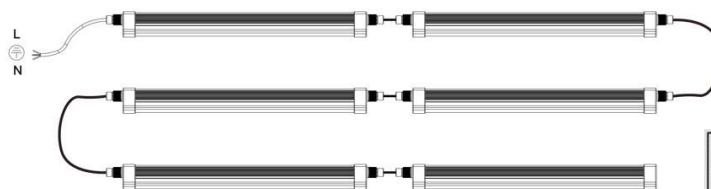
Electrical Installation

Please verify electrical codes with your contractor.

CONFIGURATION A: Input 220-240VAC: The max wattage is 600W for this configuration.



CONFIGURATION B: Input 120VAC: The max wattage is 600W for this configuration.

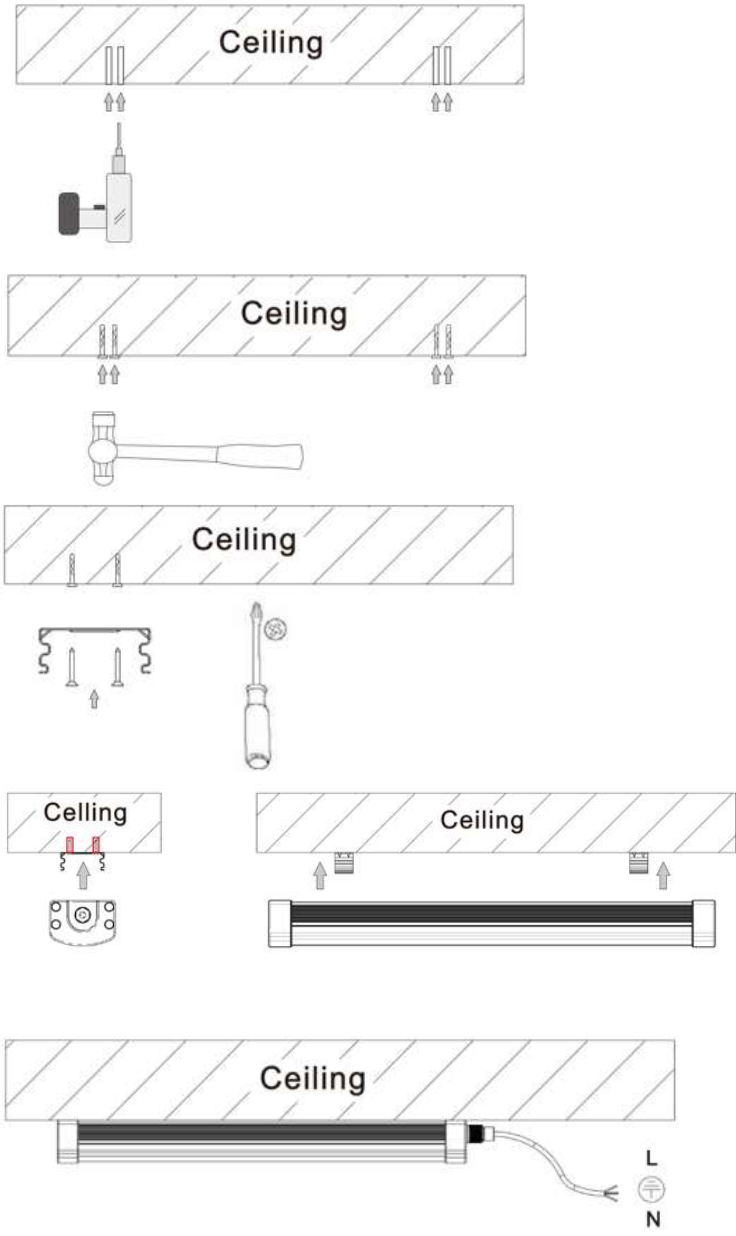


MAR-TP Series



Mechanical Installation

OFF Turn off MAINS before installation.



ON Turn on MAINS.

STEP 1:
Drill 4xØ6mm holes into the ceiling. The depth of which is to be determined by the plastic expansions and the screws being used.

STEP 2:
Insert and knock each plastic expansion into the drilled holes.

STEP 3:
Install the bracket into the plastic expansion and secure the bracket using

STEP 4:
Fix the light into the bracket

STEP 5:
Verify main power is switched off. Complete the electrical connections between lights or between mains and the luminaire.



MAR-TP Series



The Solution for Effective LED Lighting

Visit us at
www.lumigentech.com

Or call us at 1.604.371.4112

*Specifications and dimensions are subject to change
without notice.*



www.lumigentech.com

NOTES: Specifications and dimensions are subject to change without notice.
Visit us at www.lumigentech.com
Office Telephone: 1.604.371.4112

Last Revised: 10/7/2015