

MAR-T8 Series



MARICI LED TUBE SERIES



Fluorescent lighting has long been a staple of lighting in many indoor applications such as classrooms, offices, warehouses, and many other environments. With the development of new technology, LED tubes have become an ideal replacement for this older style of lighting. LED technology can deliver much higher efficiency, and greater light output at a variety of color temperatures. Our LED tubes will not only save a great deal of energy and prevent the need for maintenance, but will, in addition, increase the footcandles in your workplace.

LED tubes do not require a new fixture. They can be installed directly into existing fixtures. The *MAR T8 SERIES LED TUBES* provide the best solution for new projects as they do not require ballast. For retrofits, the ballast and/or starter must be bypassed.



MAR-T8 Series



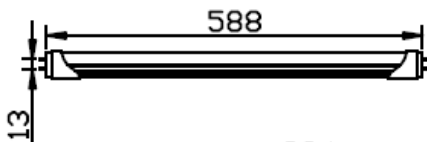
Specifications

Model	MAR-T8-0009	MAR-T8-0018	MAR-T8-0020	MAR-T8-0022
Wattage	10 W	18 W	20 W	22 W
Efficacy	≥100 lm/W	≥100 lm/W	≥100 lm/W	≥100 lm/W
Available Color Temp.	2700-6500 K	3500K, 4000K, 5000K	3500K, 4000K, 5000K	3000-5000 K
Dimensions	588mm [23.1"]	1198mm [47.17"]	1198mm [47.17"]	1198mm [47.17"]
Voltage	AC100-277V	AC100-277V	AC100-277V	AC100-277V
L70	≥50,000 hours	≥50,000 hours	≥50,000 hours	≥50,000 hours
CRI	≥80	≥80	≥80	≥80
Power Factor	≥0.92	≥0.92	≥0.92	≥0.92
Warranty	3 YEARS	3 YEARS	3 YEARS	3 YEARS

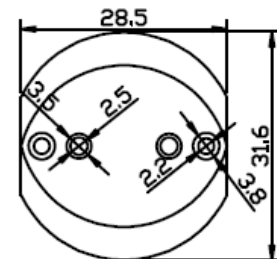
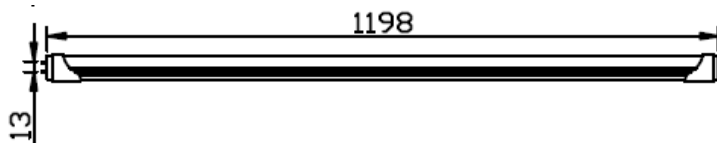
Dimensions

All dimensions shown are in millimeters.

MAR-T8-0009



MAR-T8-0018, MAR-T8-0020, MAR-T8-0022



Geometry of one end of the LED tube.



MAR-T8 Series



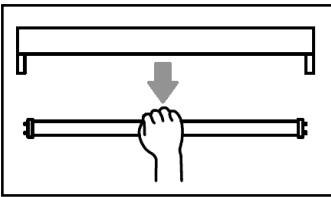
Installation

Turn OFF power before installing or making adjustments. If a ballast/starter is present, rewiring may be necessary. Wiring diagram should be based on **Figure 1 (below)**. Correct electrical polarity needs to be observed. Installation/modifications must be performed by a licensed electrician.



Turn off Mains

1.



STEP 1:

Remove existing tubes from fixture.

2.

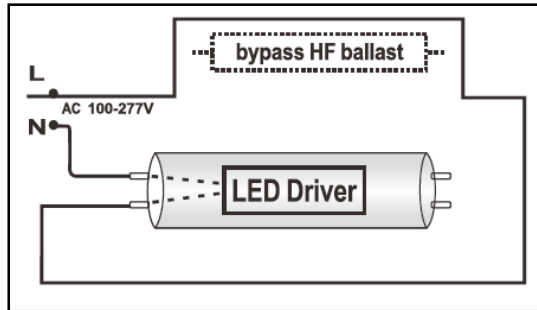


Figure 1

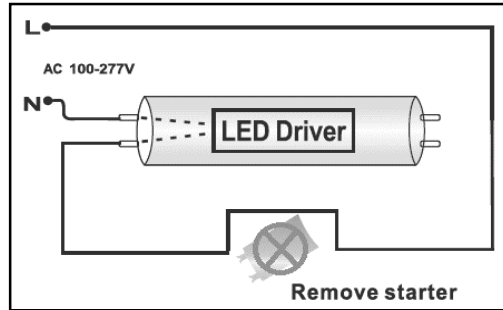
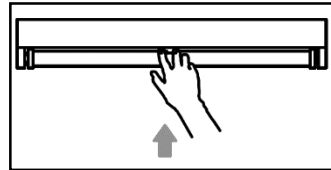


Figure 2

STEP 2:

Bypass any existing ballast (shown in *Figure 1*)
Remove the starter, if present (shown in *Figure 2*)

3.



STEP 3:

Install LED tube into fixture.



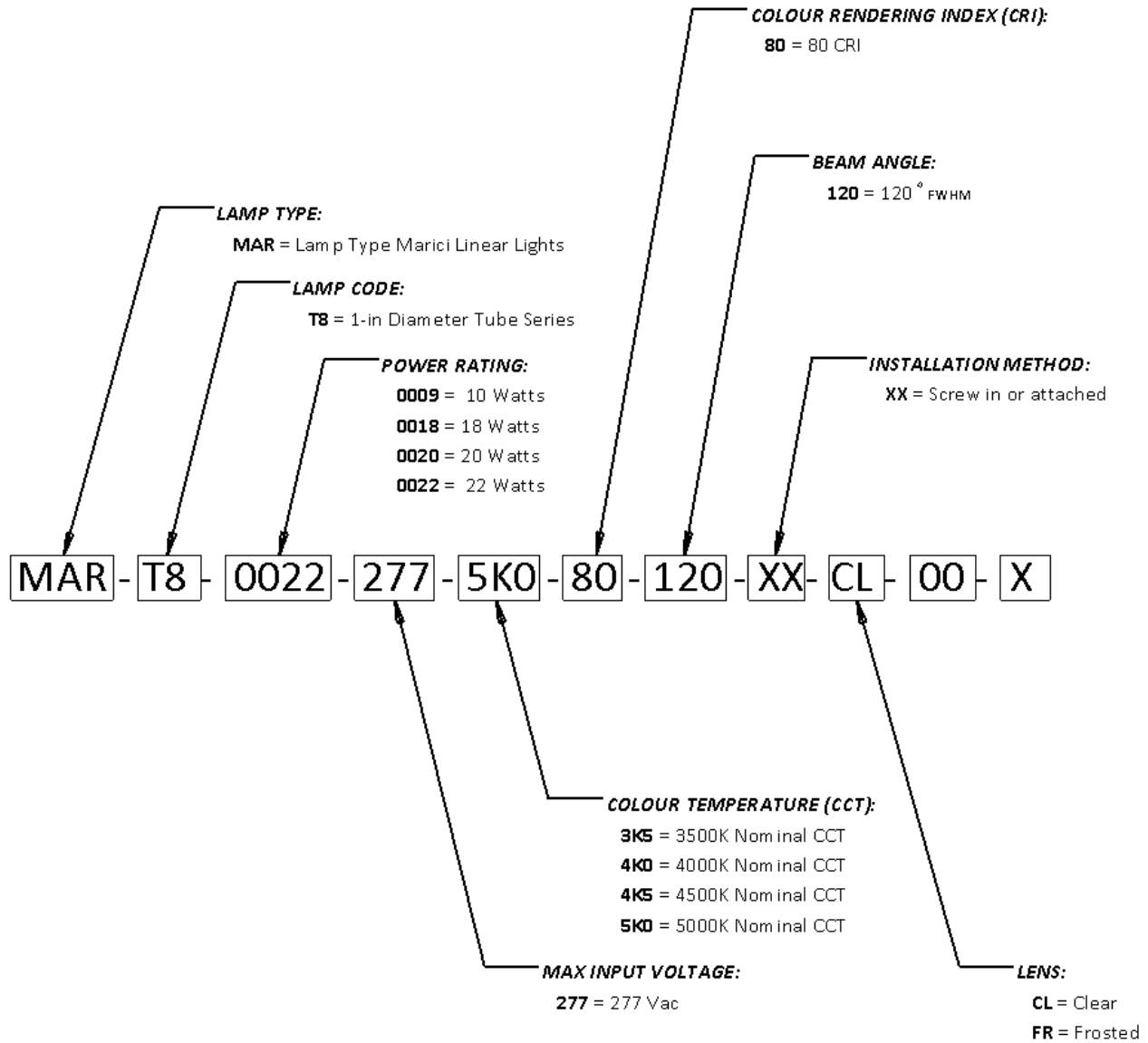
Turn on Mains



MAR-T8 Series



Ordering Code



Ordering Code Table

LAMP TYPE	LAMP CODE	POWER RATING	MAX INPUT VOLTAGE	CCT	CRI	BEAM ANGLE	INSTALL METHOD	LENS	[NULL]	[NULL]
MAR	T8	0009 0018 0020 0022	277	3K5 4K0 4K5 5K0	80	120	XX	CL FR	00	X



MAR-T8 Series



The Solution for Effective LED Lighting

Visit us at

www.lumigentech.com

Or call us at 1.604.371.4112

Specifications and dimensions are subject to change without notice.



www.lumigentech.com

NOTES: Specifications and dimensions are subject to change without notice.
Visit us at www.lumigentech.com
Office Telephone: 1.604.371.4112

Last Revised: 6/28/2016