

MARICI LED TRI-PROOF LINEAR SERIES



Fluorescent lighting has long been a staple of lighting in many indoor applications such as classrooms, offices, and warehouses. With the development of new technology, linear light using LEDs have become an ideal replacement for these lights. LED technology can deliver much higher efficiency, and greater light output at a variety of color temperatures.

MARICI TRI-PROOF SERIES boasts an IP65 rating, which means this light is suitable for many indoor and outdoor applications—preventing water or dust ingress. Its frame is also designed to withstand great stress, allowing it to be highly resistant to physical wear.



MAR-TP Series

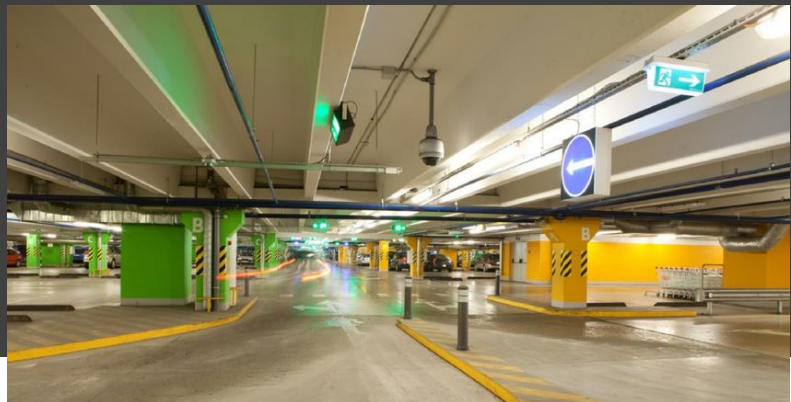


APPLICATIONS



Applicable Locations & Uses:

- Steel Plant
- Electric Power Plant
- Aquarium
- Parkade
- Warehouse

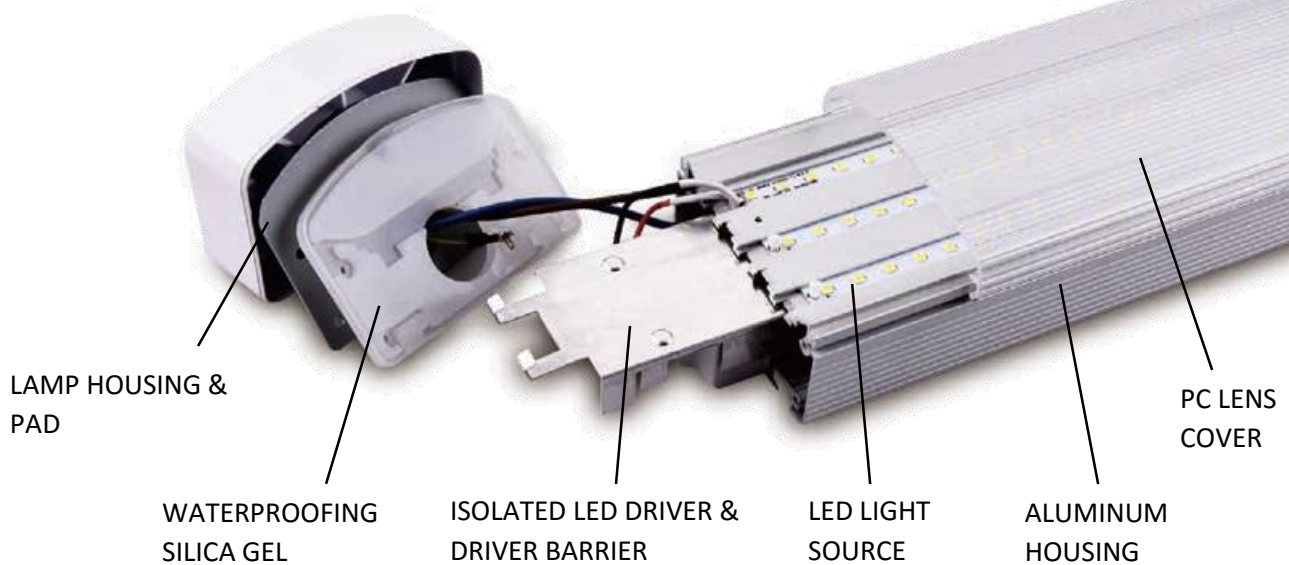


MAR-TP Series



Specifications

Model	MAR-TP-0030	MAR-TP-0040	MAR-TP-0060	MAR-TP-0080
Wattage	30 W	40 W	60 W	80 W
Efficacy	≥90 lm/W	≥95 lm/W	≥90 lm/W	≥95 lm/W
Available Color Temp.	2700-6500 K	2700-6500 K	2700-6500 K	2700-6500 K
Dimensions	628mm [24.7"]	900mm [35.4"]	1200mm [47.2"]	1500mm [59.1"]
Voltage	AC100-277V	AC100-277V	AC100-277V	AC100-277V
L80	≥50,000 hours	≥50,000 hours	≥50,000 hours	≥50,000 hours
CRI	≥80	≥80	≥80	≥80
Certifications & Listings	ETL	ETL	ETL, DLC, E.Catalog	ETL
Additional Features	Pc Lens Cover (Striped/Frosted)			
Warranty	5 YEARS			
Installation	Ceiling Mounted			

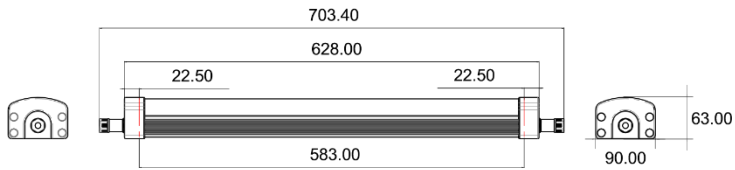


MAR-TP Series

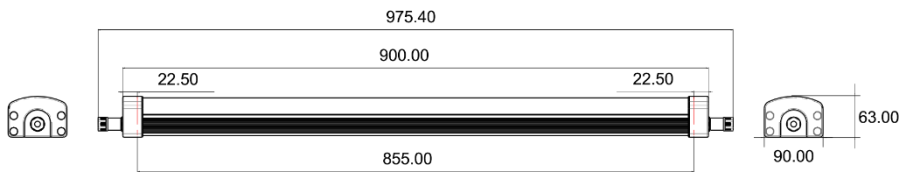


Dimensions

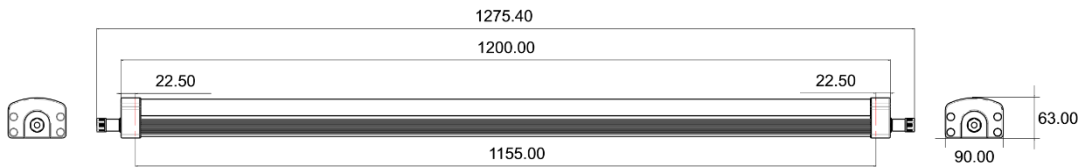
MAR-TP-0030



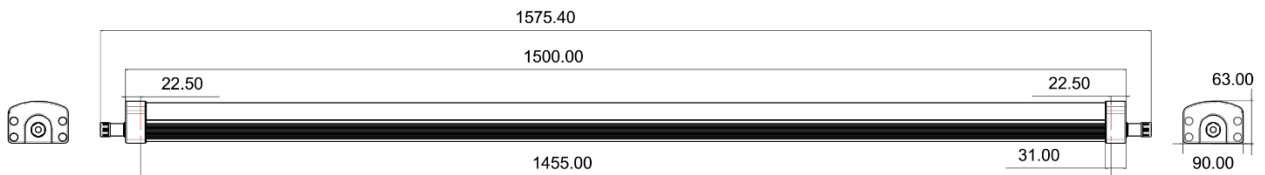
MAR-TP-0040



MAR-TP-0060



MAR-TP-0080



Installation

Installation Overview

MAR-TP Series luminaires are attached using brackets that are ceiling mounted. Two brackets per fixture will be provided. Screws and plastic expansions will not be provided. **Please verify local installation codes with your contractor**

SAFETY INFORMATION:

- The fixture and its components cannot be mechanically pressed.
- Correct electrical polarity needs to be observed at all times.
- Ensure the power is adapted to operate the total load.
- Installation must not damage the conducting paths on the circuit board
- Parallel connection is highly required as a safe electrical operation mode
- When installing on metallic or other surface, an electrical isolation point between strip and the installing surface is recommended.
- Only qualified individuals are allowed to perform installations, modifications, or removals.
- Damages by corrosion cannot be used as grounds for materials defect claim. It is the user's responsibility to provide a suitable protection against moisture, condensation and other harmful elements,

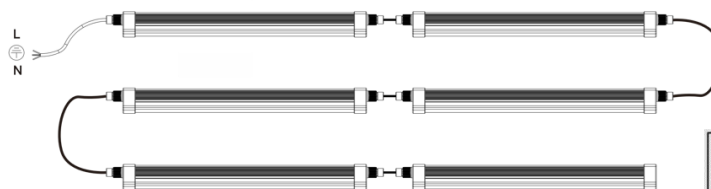
Electrical Installation

Please verify electrical codes with your contractor.

CONFIGURATION A: Input 220-240VAC: The max wattage is 600W for this configuration.

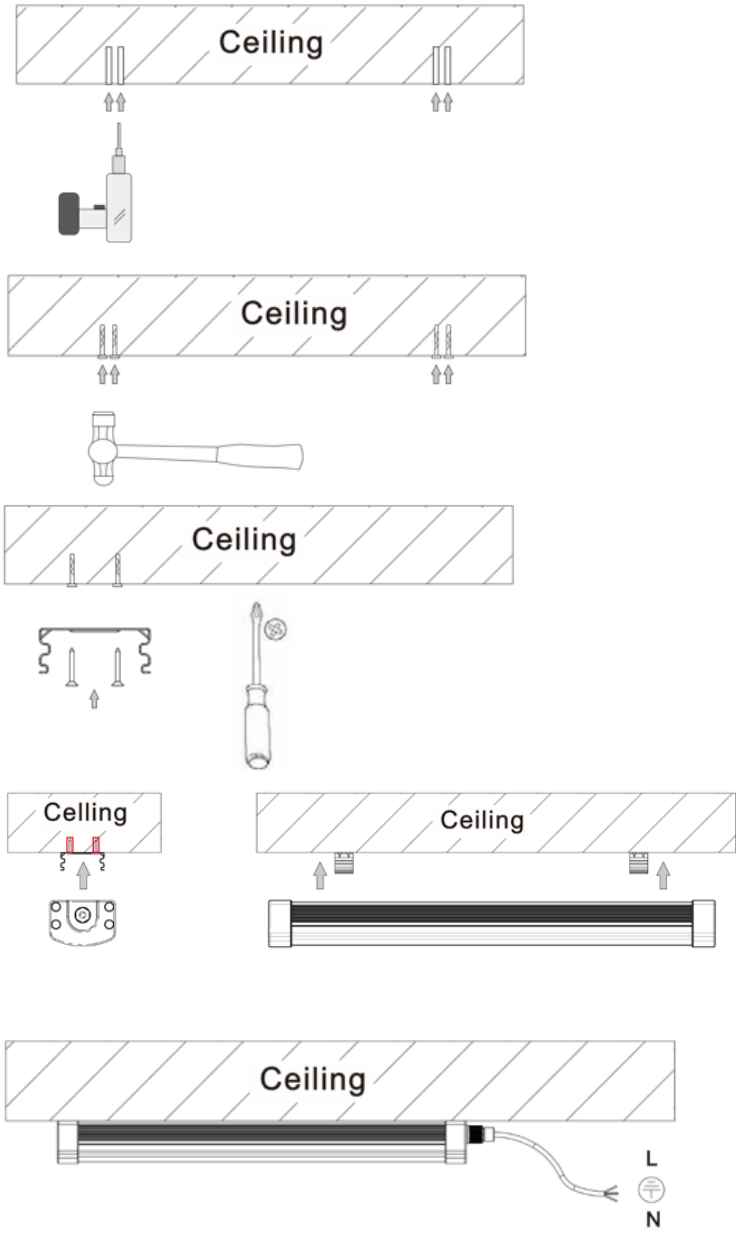


CONFIGURATION B: Input 120VAC: The max wattage is 600W for this configuration.



Mechanical Installation

OFF Turn off MAINS before installation.



ON Turn on MAINS.

STEP 1:

Drill 4xØ6mm holes into the ceiling. The depth of which is to be determined by the plastic expansions and the screws being used.

STEP 2:

Insert and knock each plastic expansion into the drilled holes.

STEP 3:

Install the bracket into the plastic expansion and secure the bracket using

STEP 4:

Fix the light into the bracket

STEP 5:

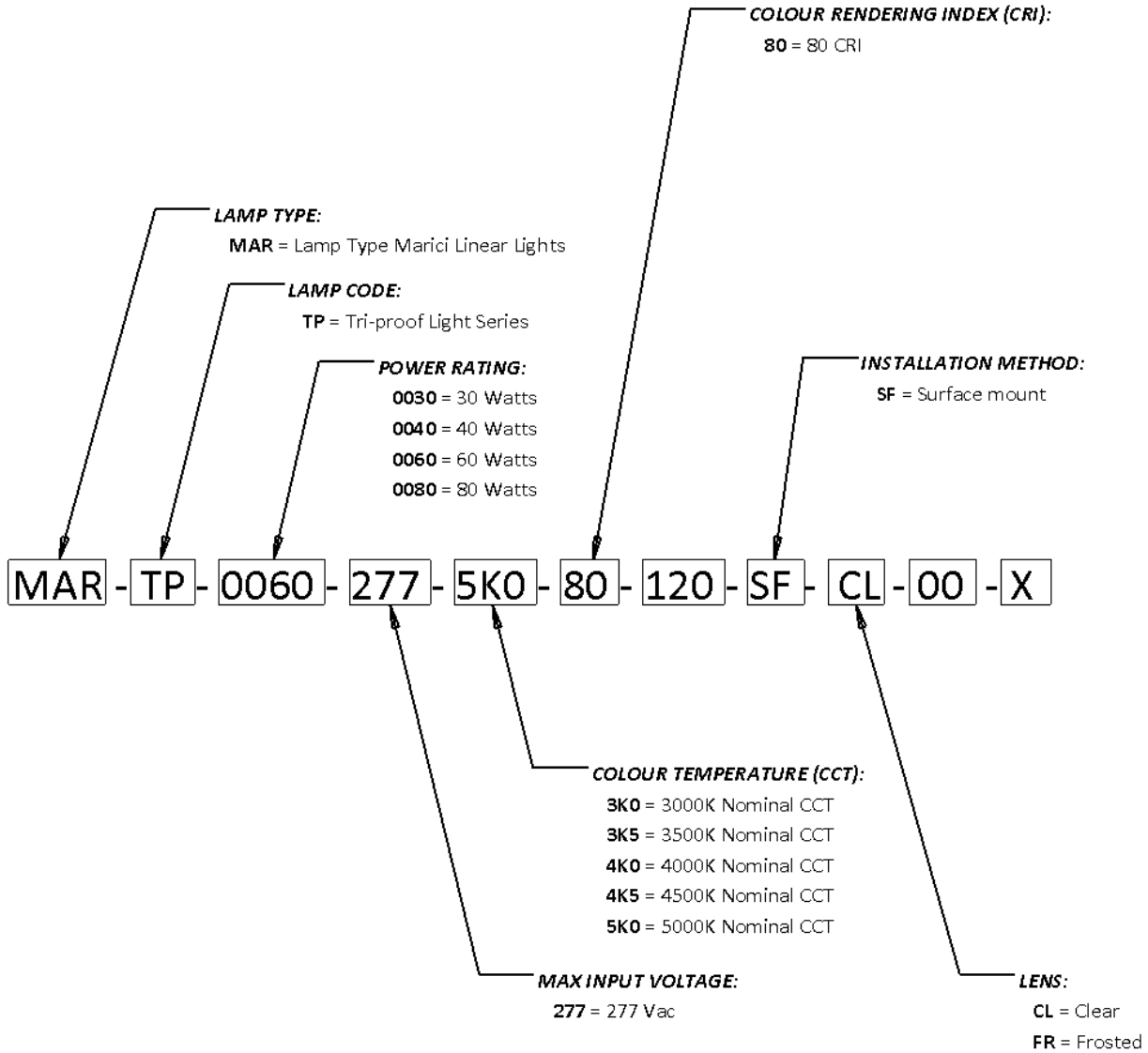
Verify main power is switched off. Complete the electrical connections between lights or between mains and the luminaire.



MAR-TP Series



Ordering Code



Ordering Code Table

LAMP TYPE	LAMP CODE	POWER RATING	MAX INPUT VOLTAGE	CCT	CRI	[NULL]	INSTALL METHOD	LENS	[NULL]	[NULL]
MAR	TP	0030 0040 0060 0080	277	3K0 3K5 4K0 4K5 5K0	80	120	SF	CL FR	00	X



MAR-TP Series



The Solution for Effective LED Lighting

Visit us at
www.lumingen.com

Or call us at 1.604.371.4112

*Specifications and dimensions are subject to change
without notice.*



www.lumingen.com

NOTES: Specifications and dimensions are subject to change without notice.
Visit us at www.lumingen.com
Office Telephone: 1.604.371.4112

Last Revised: 6/28/2016