

# SLD-HM Series



## LED HIGH MAST *HIGH-OUTPUT* SERIES



The *Lumingen Technologies' HM High-Output Series* are high-output variants of the *SLD-HM-0560* model. Using the latest in LED technology and thermal dissipation systems, the *HM Series* have  $L_{70}$  lifespans, delivered outputs, and efficacies that far exceed any traditional high output luminaire. This is exceptionally advantageous for applications such as high-mast roadway lighting, port/railway intermodal yard lighting, or sports field lighting—applications of which require high output and long operating life.

Between its various outputs and its diverse selection of beam angles, these luminaires are low-cost and durable. They are designed to withstand a variety of harsh conditions. The combination of these aspects makes the *HM Series* formidable alternatives to any other high-output light in the market—traditional or LED otherwise.



[www.lumingen.com](http://www.lumingen.com)

NOTES: Specifications and dimensions are subject to change without notice.

Visit us at [www.lumingen.com](http://www.lumingen.com)  
Office Telephone: 1.604.371.4112

Last Revised: 11/25/2015

# SLD-HM Series



## Specifications

Model	SLD-HM-0800	SLD-HM-1000	SLD-HM-1200
<i>Delivered Lumens</i>	86,600 lm	109,400 lm	130,900 lm
<i>Wattage</i>	740 W	935 W	1120 W
<i>Efficacy</i>	117 lm/W	117 lm/W	117 lm/W
<i>Voltage</i>	AC100-480V	AC100-480V	AC100-480V
<i>Correlated Color Temp.</i>	2700-6500 K	2700-6500 K	2700-6500K
<i>Life Span</i>	120,000 hours	120,000 hours	120,000 hours
<i>CRI</i>	>70	>70	>70
<i>Optional CRI</i>	>80, >90	>80, >90	>80, >90
<i>Beam Angle</i>	10°, 25°, 60°, 120°	10°, 25°, 60°, 120°	10°, 25°, 60°, 120°
<i>Weight*</i>	32.60 kg [71.9 lb.]	36.4 kg [80.3 lb.]	36.4 kg [80.3 lb.]
<i>Operating Temperature</i>	-40° to 55°C		
<i>Dimensions</i>	772mm×622mm×155mm [30.4"×24.5"×6.10"]		
<i>Dimmable</i>	OPTIONAL FOR 0-10V DIMMABLE		
<i>Additional Features</i>	PER REQUEST		
<i>Warranty</i>	5 YEARS		
<i>Installation</i>	BRACKET MOUNTED		

*\*Fixture weights specified are displayed for the standard configuration for each model. Weight fluctuation will be dependent on desired configuration*

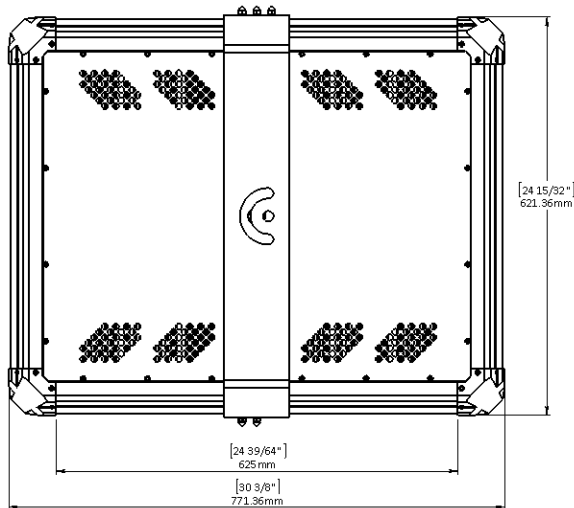


# SLD-HM Series

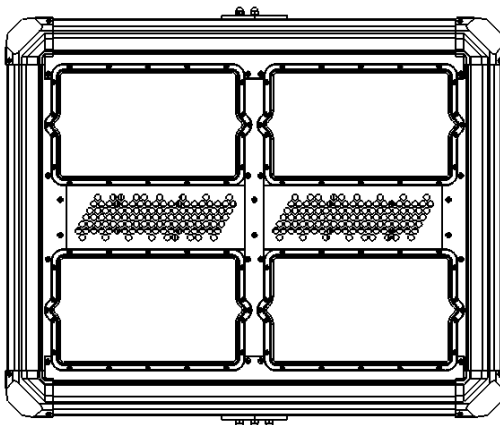
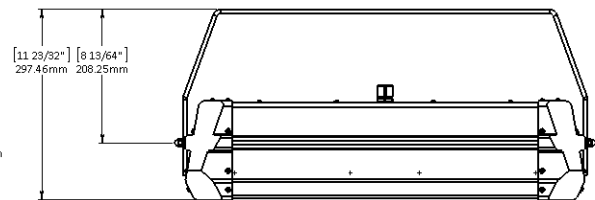
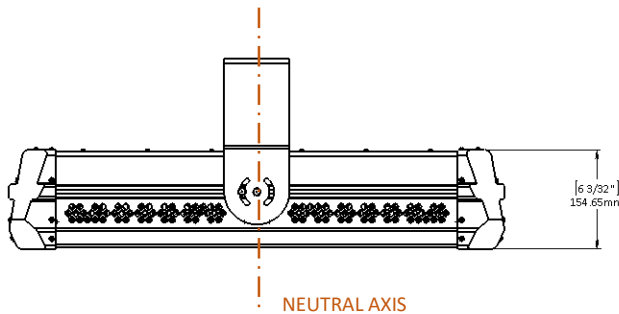


## Dimensions

HIGH MAST LUMINAIRE (SLD-HM-0740, SLD-HM-0930, SLD-HM-1100)



The bracket can be positioned at angles from  $-50^{\circ}$  to  $50^{\circ}$  from **neutral axis** (as shown). The bracket can also be positioned on either sides of neutral axis with a distance 261mm [10.3"]



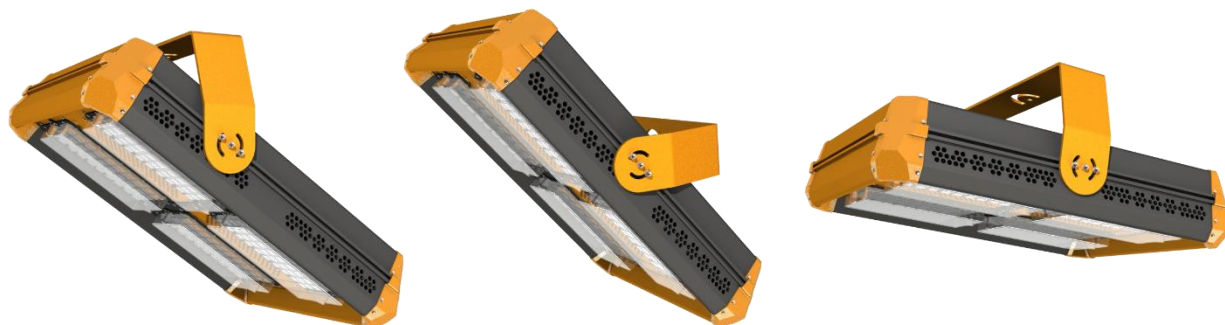
Perforations at key surfaces on the luminaire allow for optimal air circulation, which allow for excellent heat dissipation from the LEDs.



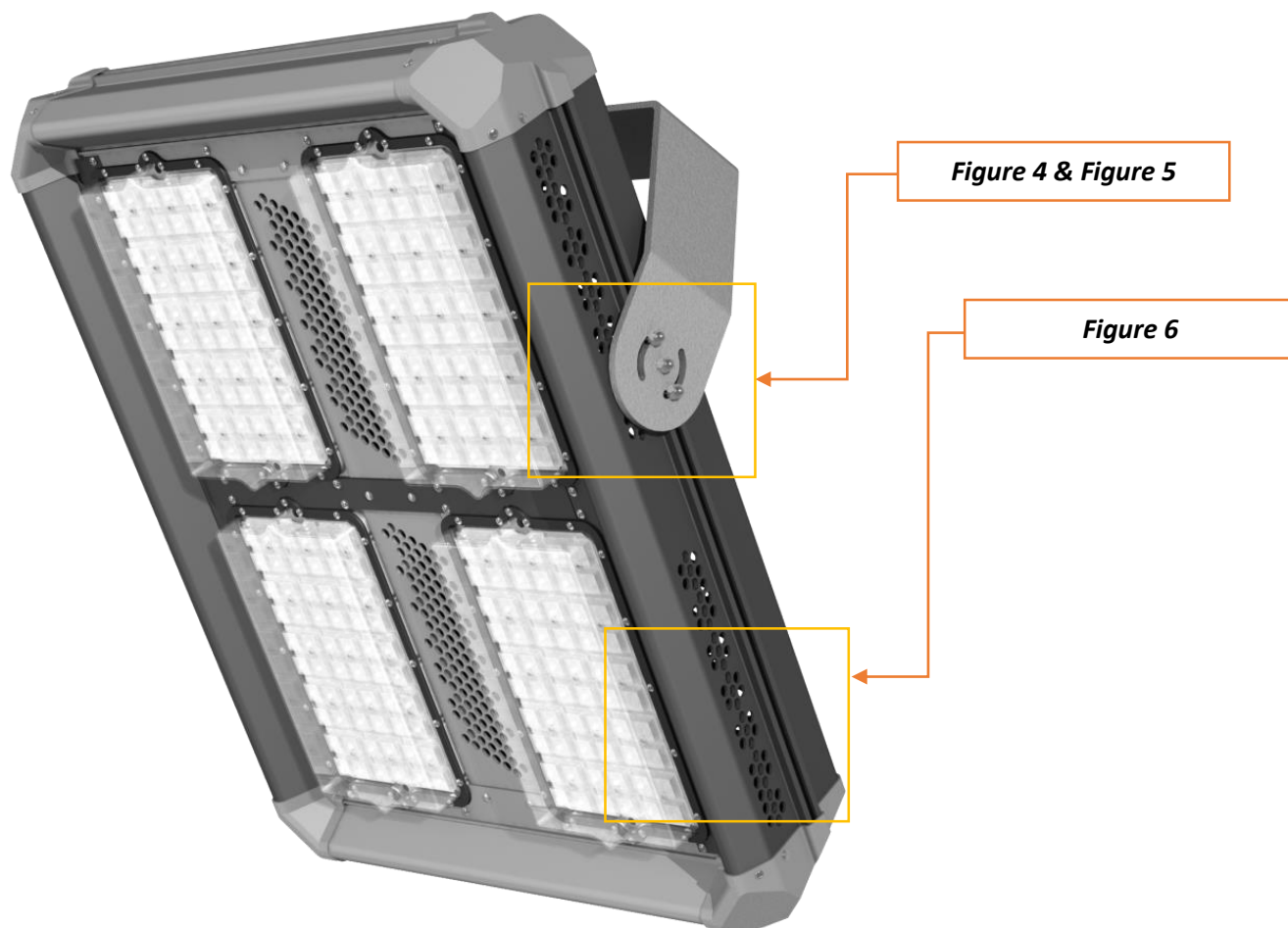
# SLD-HM Series



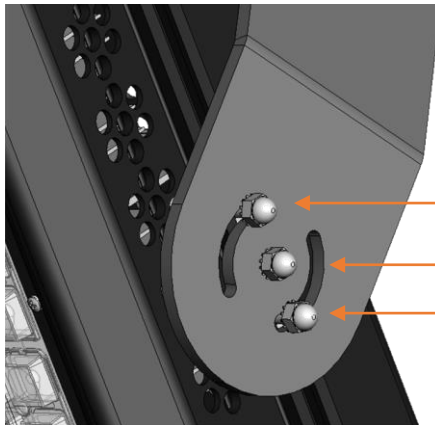
## Fixture Orientation



*Figure 1, 2, & 3—the extrusion design allows for variable orientations while maintaining low cost and high durability.*



# SLD-HM Series



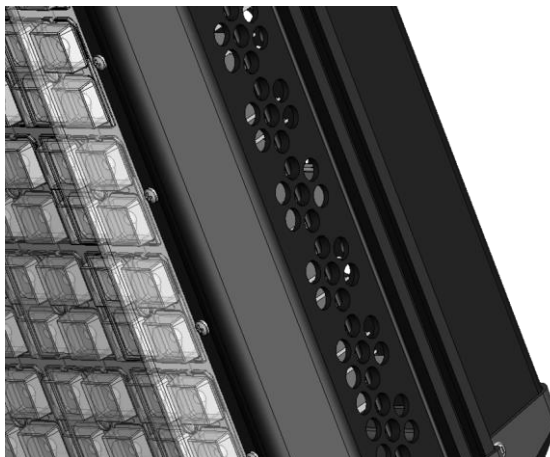
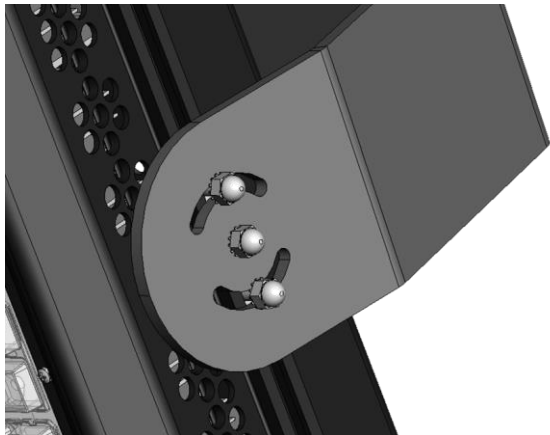
Acorn Nut-1

Acorn Nut-Center

Acorn Nut-2

**Figure 4** (above)—the acorn nuts secure the bracket in any rotational or linear position (permitted by the luminaire)

**Figure 5** (below)—depicts neutral alignment for the bracket. The bracket may be rotated -50° to +50° from this angular position.



## Adjustment Procedure

**NOTE:** Always secure main body [Luminaire] with the proper safety cable before making **any** field adjustments. Use cable approved for loads up to 900 lb.

1. Loosen **Acorn Nut- 1 & Acorn Nut-2**. Do the same on the opposite end of the bracket.
2. Loosen **Acorn Nut-Center**. Do the same on the opposite end of the bracket. (Make sure the luminaire is well supported)
3. Adjust the angle and/or linear position of the luminaire. Use appropriate equipment to ensure the proper angular/linear positions are met.
4. Tighten **Acorn Nut-Center**. Do the same on the opposite end of the bracket.
5. Tighten **Acorn Nut-1 & Acorn Nut-2**. Do the same on the opposite end of the bracket.

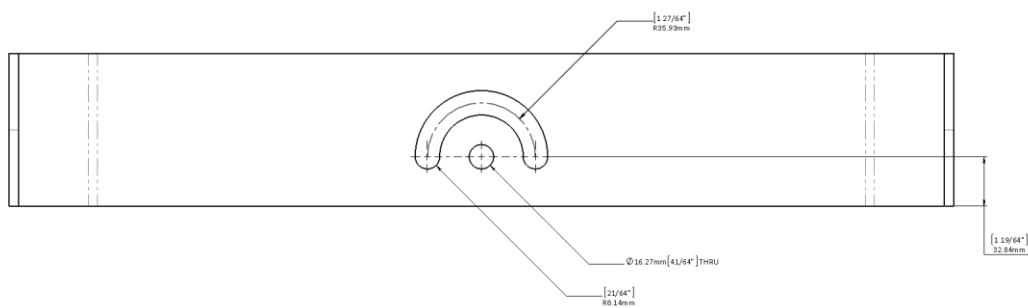
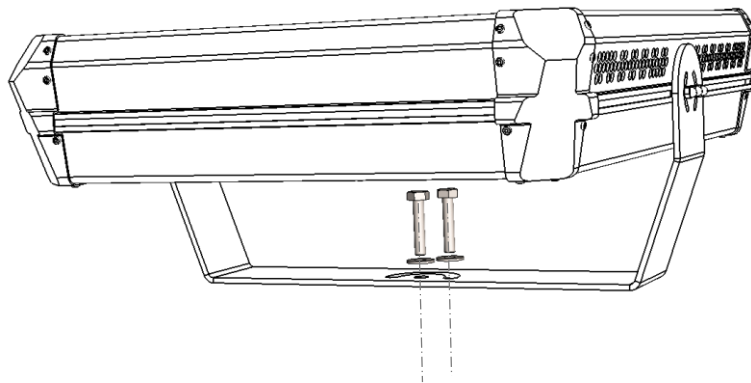
**Figure 6** (left)—the railing system that for variable linear orientation. 523mm [20.6"] from end-to-end.



## Installation

### Mechanical Installation

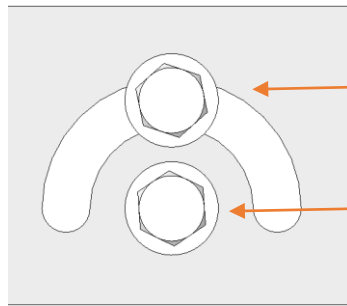
***Washers and Bolts not provided. Please verify local installation codes with your contractor.***



**Figure 7—bolt pattern for bracket**

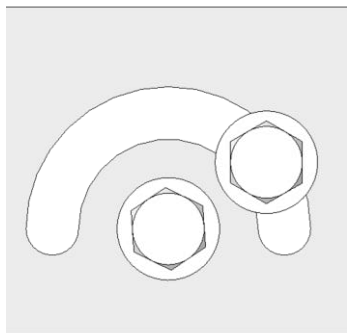


# SLD-HM Series



Bolt-1

Bolt-2



**Figure 7**—close-up on bolt pattern on the bracket

**Figure 8**—depicts rotational adjustability of the bracket

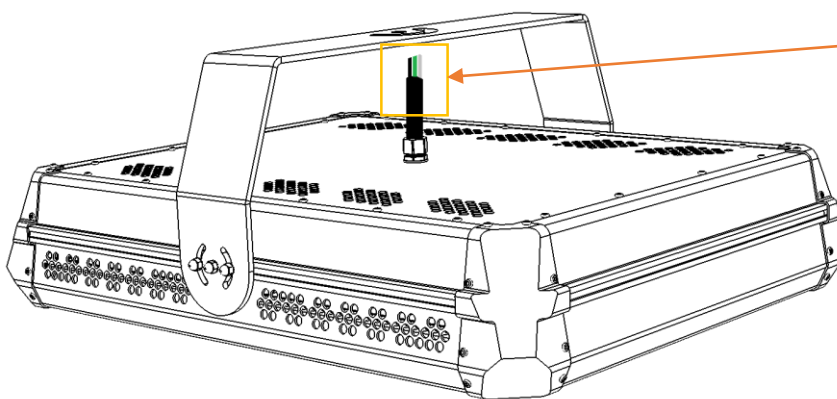
## Adjustment Procedure

**NOTE:** Always secure main body [Luminaire] with the proper safety cable before making **any** field adjustments. Use cable approved for loads up to 900 lb.

1. Loosen **Bolt-1**.
2. Loosen **Bolt-2**. (Make sure the luminaire is well supported)
3. Adjust angle of the entire fixture. Use appropriate equipment to ensure the proper angular positions are met.
4. Tighten **Bolt-2**.
5. Tighten **Bolt-1**.

## Electrical Installation

**Verify electrical codes with your electrical contractor.**



White: Negative

Black: Live

Green: Ground



# SLD-HM Series



*The Solution for Effective LED Lighting*

Visit us at  
[www.lumingen.com](http://www.lumingen.com)

Or call us at 1.604.371.4112

*Specifications and dimensions are subject to change  
without notice.*



[www.lumingen.com](http://www.lumingen.com)

NOTES: Specifications and dimensions are subject to change without notice.  
Visit us at [www.lumingen.com](http://www.lumingen.com)  
Office Telephone: 1.604.371.4112

Last Revised: 11/25/2015