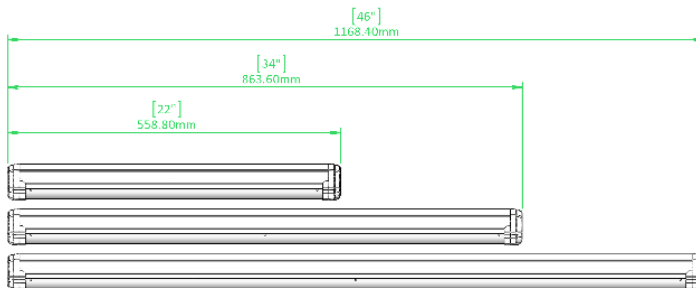




LN Series, Ultra-High Efficiency

Linear LED Lighting Systems



Hydro e-CATALOG

C US
DRY/DAMP
LOCATIONS

Specifications & Installation Guide

IMPORTANT SAFETY INSTRUCTIONS *Mesures de Sécurité à Respecter*

This product must be installed in accordance with the applicable installation code by a person familiar with the construction and operation of the product and the hazards involved. Ce produit doit être installé selon le code d'installation pertinent, par une personne qui connaît bien le produit et son fonctionnement ainsi que les risques inhérents.

Twist-on wire connectors are not re-usable. Replace only with weather-proof twist-on wire connectors. Twist-on wire connecteurs ne sont pas réutilisables. Utiliser des connecteurs seulement intempéries.

Table of Contents

SLD-LN-xxxx Specifications	3
Overview	3
Electrical Installation	4
Overview	4
Standard Wiring Schematic	4
General Installation	5
Overview	5
Assembly Procedure	5



LN series

SLD-LN-xxxx Specifications

Overview

Model Number	SLD-LN-0030	SLD-LN-0040	SLD-LN-0060	SLD-LN-0100	SLD-LN-0120
Dimensions (cm)	56 x 10 x 6	87 x 10 x 6	117 x 10 x 6	117 x 10 x 6	117 x 10 x 6
Lumen Output (Lumens)	4,020 lm	6,100 lm	7,900 lm	15,080 lm	16,800 lm
Power Rating (Watts)	27 W	41 W	53 W	104 W	120 W
Input Voltage (Volts AC)	100/277/347 VAC 50/60 Hz	100/277/347 VAC 50/60 Hz	100/277/347 VAC 50/60 Hz	100/277/347 VAC 50/60 Hz	100/277/347 VAC 50/60 Hz
Operating Temperature (degree Celsius)	-40 °C to +50°C	-40 °C to +55°C	-40 °C to +55°C	-40 °C to +55°C	-40 °C to +55°C
Weight (kilogram)	1.20 kg	1.99 kg	2.57 kg	2.94 kg	2.94 kg

Listing: cCSAus Certified. Suitable for Dry and Damp Locations. DLC QPL Listed. E.Catalog Listed.

Lensing Material: Optically-clear or diffuse (frosted) polycarbonate lensing.

Housing: Aluminum extrusion, powder-coated white; ABS plastic endcaps



LN series

Electrical Installation

Overview

This product must be installed in accordance with the applicable installation code by a person familiar with the construction and operation of the product and the hazards involved. *Ce produit doit être installé selon le code d'installation pertinent par une personne qui connaît bien le produit et son fonctionnement ainsi que les risques inhérents.*

Twist-on wire connectors are not re-usable. Replace only with un-used twist-on connectors. *Remplacer uniquement avec de nouveaux twist-on connecteurs de fils.*

Standard Wiring Schematic

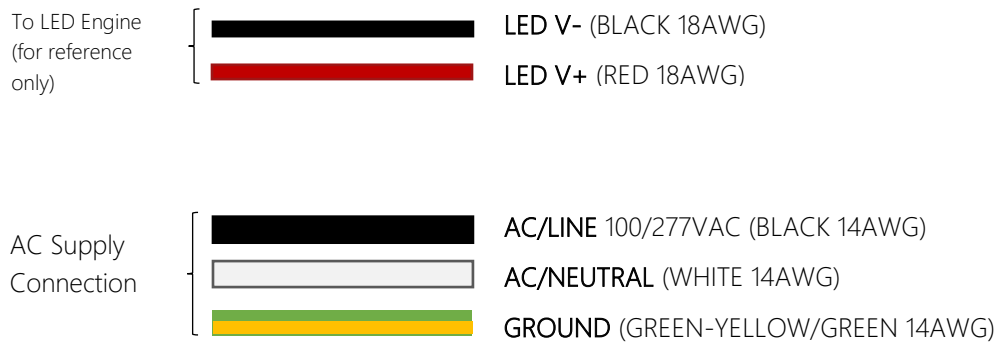


Figure 1—Color coding of the wiring for the luminaire.



LN series

General Installation

Overview

This product must be installed in accordance with the applicable installation code by a person familiar with the construction and operation of the product and the hazards involved. *Ce produit doit être installé selon le code d'installation pertinent par une personne qui connaît bien le produit et son fonctionnement ainsi que les risques inhérents.*

Twist-on wire connectors are not re-usable. Replace only with un-used twist-on connectors. *Remplacer uniquement avec de nouveaux twist-on connecteurs de fils.*

Assembly Procedure

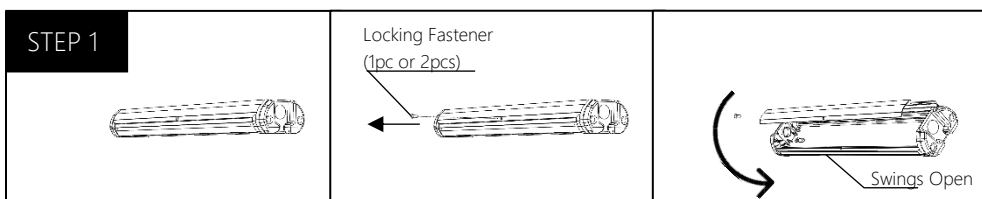


Figure 2—series of 3 images to the left. On the long-side of the luminaire, remove the screws located along the center-line of the assembly. This allows internal access to the luminaire. Exercise caution when opening the luminaire.

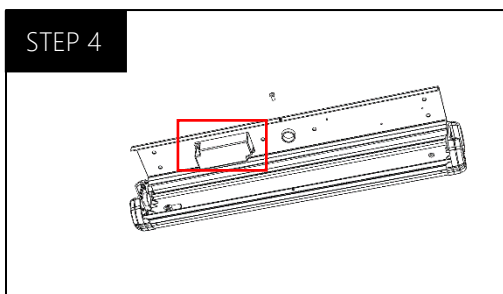
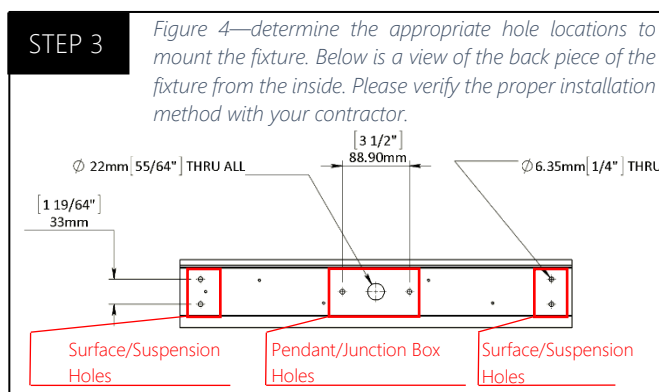
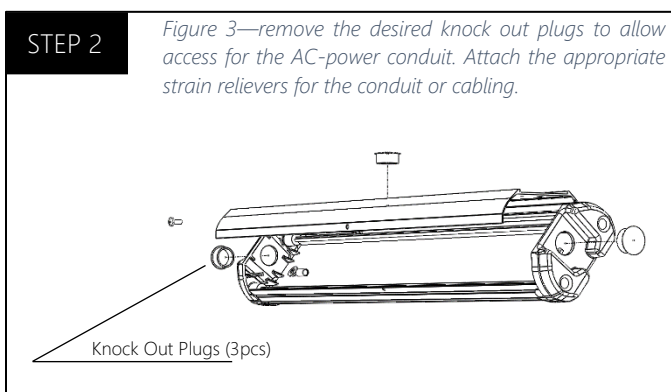


Figure 5—following the electrical installation guidelines, wire the AC-power to the luminaire. Ensure the main power is off, AC line is not energized, and correct polarity is observed during installation.

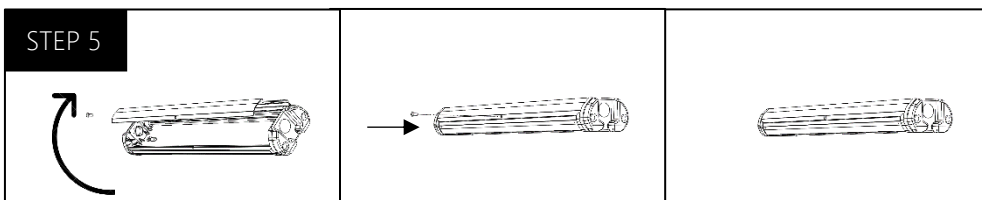


Figure 6—series of 3 images to the left. Once installation is complete, close the luminaire, and replace the locking fasteners that securely closes the luminaire enclosure.



LN series



The Solution for Effective LED Lighting

Visit us at
www.lumingen.com

Or call us at 1.604.371.4112

*Specifications and dimensions are subject to change
without notice.*

