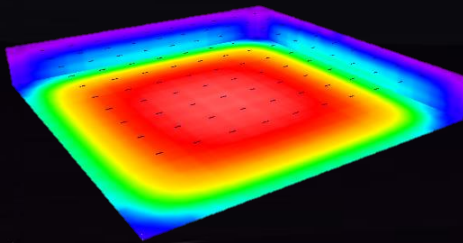




LN Series, Ultra-High Efficiency Linear Lighting Systems

The new **SLD-LN-xxxx** family of lights from Lumingen incorporate sophisticated technology that delivers extremely high lumen/watt efficiency and amazing illumination levels, combined with a sleek, architecturally pleasing design that is equally at home in a commercial or industrial setting.

This series is available at nominal lengths of 2-ft, 3-ft, and 4-ft, and made almost entirely of light-weight aluminum to ensure a high-quality build and a robust electrical enclosure.



220' x 220' Room, 20' x 20' Spacing, Height: 28'
Mean: 35 fc Min: 10 fc Max: 46 fc

In a 220' x 220' x 28' room, the 120W SLD-LN-0120 can deliver an average of 35 fc (380 lx) with a spacing of 20' x 20' between fixtures.

It can replace 400W Metal Halide fixtures on a **one-to-one** replacement ratio.



Lumingen Technologies, Ltd.

Specs subject to change without notice. January 25, 2018

SLD-LN Linear Light Series

SLD-LN-XXXX Specifications

Listing: cCSAus Certified for Dry and Damp Locations. DLC QPL. BC Hydro E.Catalog.

Available CRI: ≥80

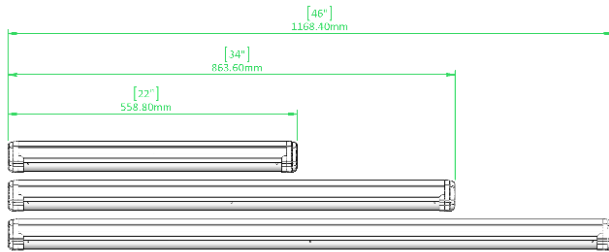
Colour Temperature (CCT): 3000-6000 K

Expected L70 Lifespan: 100,000 hours

Input Line Voltage: 120/277 VAC, 347 VAC; 50/60 Hz

Operating Temperature: -40°C to +55°C
(-40°C to +50°C for SLD-LN-0030 only)

Warranty: 5 years



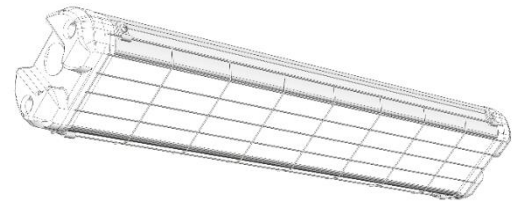
Major Feature: Excellent Efficiency, upwards to 149 lm/W; Simple and easy maintenance/electrical access for lighting control additions; sturdy linear design; straight-forward installation onto surface or by suspension kit.

Housing: Light-weight aluminum extrusion, powder-coated white; High-grade white plastic endcaps; knock-out plugs; optional add-ons include mesh lens guard

Lens: shatter/impact-resistant polycarbonate lens; clear or frosted

Standard Weight: 1.2 kg – 2.9 kg [2.2 lb. – 6.5 lb.]

Installation: Installed by screws onto ceiling, wall, etc.; or by suspension kit



Specification Table

Model	Size (cm)	Lumen ¹ (lm)	Wattage (W)	Efficiency (lm/W)	Input Voltage (VAC)
SLD-LN-0030	56 x 10 x 6	4,020	27	149	120/277, 347
SLD-LN-0040	87 x 10 x 6	6,100	41	149	120/277, 347
SLD-LN-0060	117 x 10 x 6	7,900	53	149	120/277, 347
SLD-LN-0100	117 x 10 x 6	15,080	104	145	120/277, 347
SLD-LN-0120	117 x 10 x 6	16,800	120	140	120/277, 347

Ordering Code

LAMP TYPE	SERIES CODE	POWER RATING	AC INPUT VOLTAGE	CCT	CRI	[NULL]	INSTALL METHOD	LENS	[NULL]	OPTIONS
SLD	LN	0060	277	5K0	80	120	SF	FR	00	X
SLD	LN (LED Linear Light Series)	0030 (27W) 0040 (41W) 0060 (53W) 0100 (104W) 0120 (120W)	277 (120/277V) 347 (347V)	3 K 0 (3000K) 4 K 0 (4000K) 5 K 0 (5000K) 6 K 0 (6000K)	8 0	1 2 0	P D (Pendant) S F (Surface, Ceiling) S P (Suspension Kit)	C L (Clear) F R (Diffuse)	0 0	M (Motion Sensor) V (Impact Protection) X (None)

¹Delivered Luminance Variation depends on selected Color Temperature (CCT) and Lens.



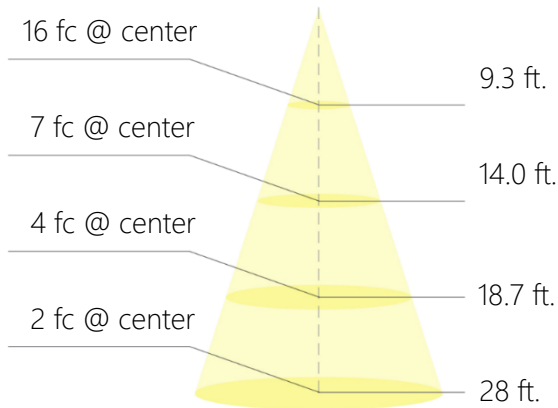
www.lumingen.com
Office: 1.604.371.4112, Toll-free: 1.855.262.2111

Specs subject to change without notice. January 25, 2018
±10% on light flux and power specifications

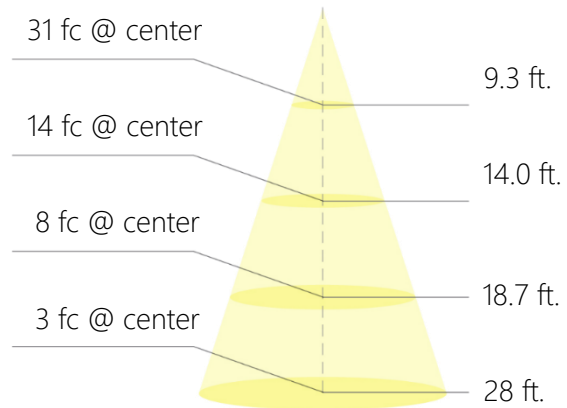
SLD-LN Linear Light Series

SLD-LN-XXXX Photometrics

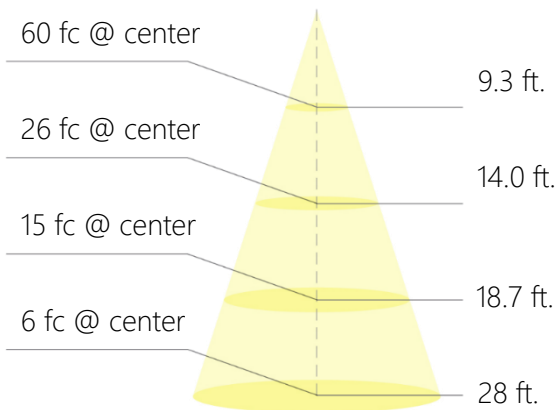
SLD-LN-0030



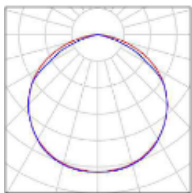
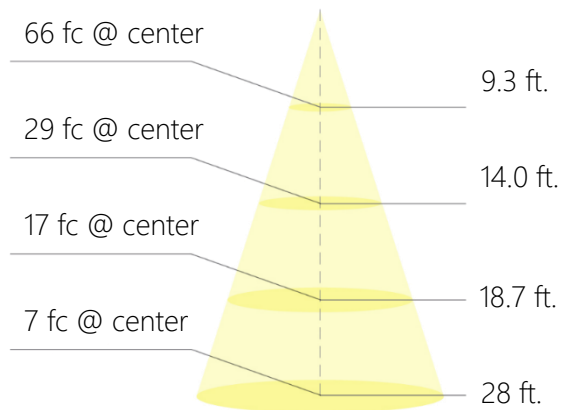
SLD-LN-0060



SLD-LN-0100



SLD-LN-0120



*SLD-LN-xxxx
Polar Candela
Distribution*

To obtain IES files for lighting simulations, please contact Lumingen at info@lumingen.com or visit our website at www.lumingen.com

