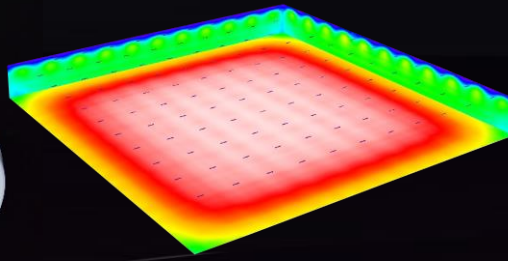
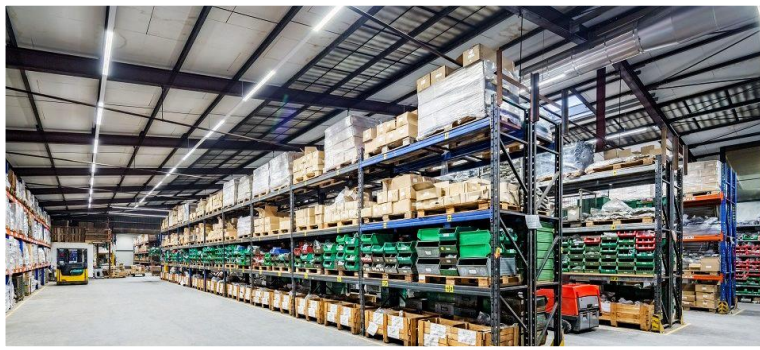




LN Series, Ultra-High Efficiency

The new **SLD-LN Series** from Lumingen was developed through our extensive experience in the high-performance lighting market. By incorporating sophisticated technologies such as aluminum extrusions, these fixtures deliver extremely high lumen/watt efficiency and incredible illumination levels. Its sleek and architecturally pleasing design is equally at home in commercial or industrial settings.

This series is available at nominal lengths of 2-ft, 3-ft, and 4-ft and can be daisy-chain/linkable for simple installation. Made almost entirely of light-weight aluminum to ensure for a robust fixture with exceptional reliability.



220' x 220' Room, 20' x 20' Spacing, Height: 24'
Mean: 44 fc Max: 50 fc

In a 220' x 220' x 24' room, the 120W SLD-LN-0120 can deliver an average of 44 fc (474 lx) with a spacing of 20' x 20' between fixtures.

It can replace 400W Metal Halide fixtures on a **one-to-one** replacement ratio.

Lumingen Technologies, Ltd.



Specs subject to change without notice. September 16, 2021

SLD-LN Linear Light Series

SLD-LN-XXXX Specifications

Listing: CSA US-Canada Certified for Dry and Damp Locations. DLC QPL. BC Hydro e.Catalog.

LED: Industry-leading Cree LEDs for low-to-mid range lighting applications. Engineered for superior efficiency allowing for an end-product efficiency upwards of 152 lm/W.

Lens: Standard 120° beam angle. High-transmission impact-resistant PC lens. Customizable Lens Material: Clear, Frosted or Prismatic.

Available CRI: ≥80

Colour Temperature (CCT): 3000-6000 K

Reported TM-21 LED chip Lifetimes:

L90(90% light output): > 45,800 hours
L70(70% light output): > 72,500 hours

Input Voltage: 120-277/ 347 VAC, 50/60 Hz

Operating Temperature: -40°C to +50°C

Construction: Light-weight extruded aluminum body with white powder-coated finish. White ABS endcaps with UL94-V0 5VA rating. Optional steel wire-guard.

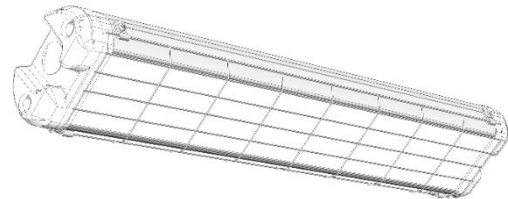
Standard Dimensions: 56~117 x 10 x 6 cm (22~46 x 4 x 2.5 in)

Standard Weight: 1.2 – 2.9 kg (2.2 – 6.5 lb.)

Installation: Simple and easy maintenance/electrical access for lighting control additions. Installation by screws onto ceiling, wall, etc.; or by suspension kit

Optional Feature: Impact-protection wire guard, 0/1-10V dimming, integrated motion sensor, surge protection, wireless control system.

Warranty: 5 years



Specification Table

Model	Size (cm)	Lumen (lm)	Wattage (W)	Efficiency (lm/W)	Input Voltage (VAC)
SLD-LN-0030	56 x 10 x 6	4,020	27	149	120~277/347
SLD-LN-0040	87 x 10 x 6	6,380	42	152	120~277/347
SLD-LN-0060	117 x 10 x 6	7,900	53	149	120~277/347
SLD-LN-0100	117 x 10 x 6	15,080	104	145	120~277/347
SLD-LN-0120	117 x 10 x 6	17,500	121	144	120~277/347

Ordering Code (e.g., SLD-LN-0060-277-5K0-80-120-SF-FR-00-M-S)

LAMP-SERIES CODE	POWER RATING	AC INPUT VOLTAGE	COLOUR TEMPERATURE	CRI	BEAM ANGLE	INSTALL METHOD	MAIN OPTIC	[N/A]	ACCESSORIES ¹
SLD-LN	0060	277	5K0	80	120	SF	FR	00	M – S
SLD-LN	0030 (27W)	277 (120-277V)	3K0 (3000K)	80	120	SP (Suspension cable kit)	CL (Clear)	00	C (Wireless Control)
	0040 (42W)	347 (347V)	4K0 (4000K)			PD (Pendant/ junction box kit)	FR (Frosted/ Diffuse)		D (0/1-10V Dimming)
	0060 (53W)		5K0 (5000K)			SF (Surface mount kit)	PR (Prismatic Patterned)		M (Multifunction Motion Sensor)
	0100 (104W)		6K0 (6000K)						S (Surge Protection)
	0120 (121W)								V (Mesh Guard)

¹ ELECTRICAL SURGE:

All LED fixtures are susceptible to voltage spikes. Surge protection is highly recommended for exterior, industrial, and manufacturing applications

